



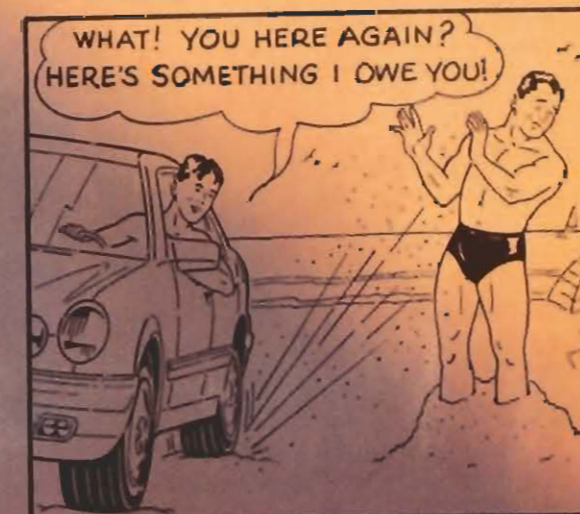
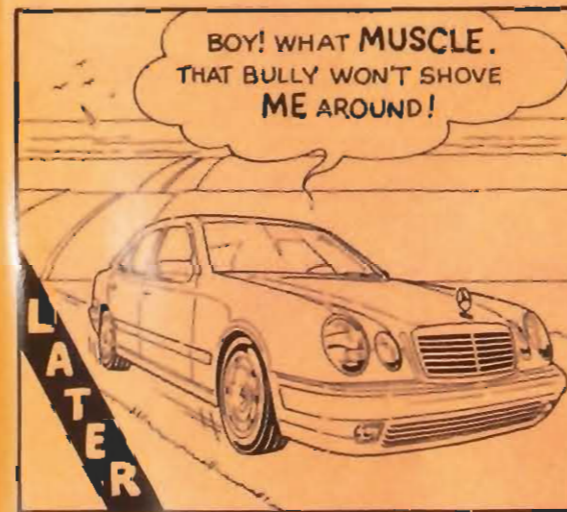
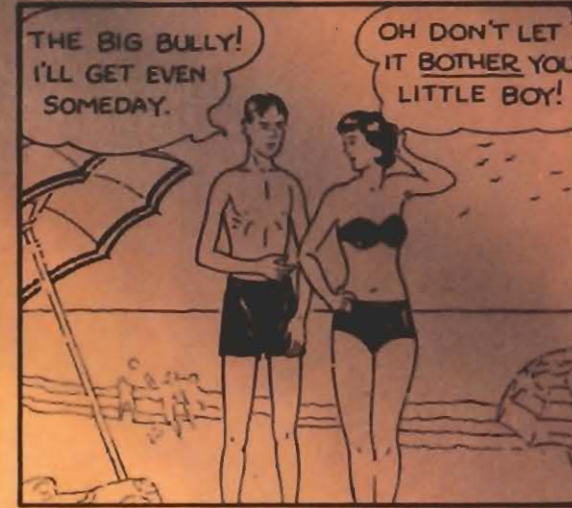
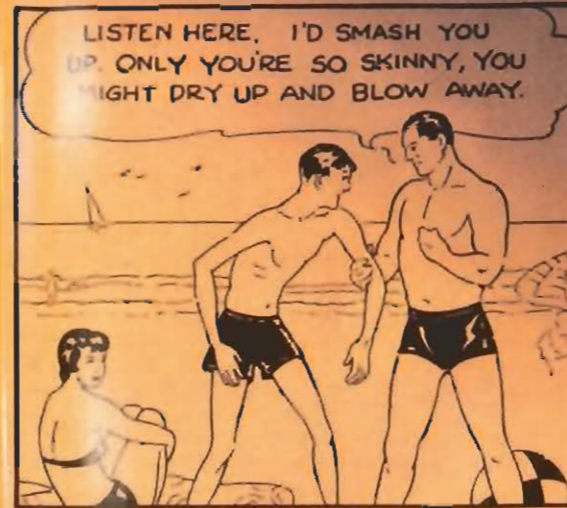
Why should style and sophistication be sacrificed for real power? Well, they aren't. Not anymore. *Now, you too can have lots of muscle.* The new E 420 packs a Herculean V-8 that can max out 0 to 60 in 6.7 seconds,<sup>†</sup> a vigorous electronic 5-speed automatic transmission, and a tenacious traction control system. Just start with this simple exercise: from the sitting position, point right foot to floor.

An optional Electronic Stability Program (ESP)<sup>\*\*</sup> actually senses when the car moves from your intended path and automatically helps put it back on course. (This hard body's got brains too.)



The V-8 powered E420 starting at \$49,900\*

# THE INSULT THAT MADE A MAN OUT OF "MAC"



Mercedes-Benz of North America, Inc.  
P.O. Box 345,  
Montvale, NJ 07645

**Yes!** Rush me the FREE Mercedes E420 brochure that tells me how I can have muscle and a luxurious drive.

Name \_\_\_\_\_ Phone \_\_\_\_\_  
Address \_\_\_\_\_ City \_\_\_\_\_  
State \_\_\_\_\_ Zip \_\_\_\_\_ What car do you currently drive? \_\_\_\_\_

For immediate response, call 1-800-FOR-MERCEDES or explore our Web site, <http://www.usa.mercedes-benz.com>.

<sup>†</sup>Stated rates of acceleration are based upon manufacturer's track results & may vary depending upon model, environmental & road surface condition, driving style, elevation & vehicle load. \*MSRP for an E420 excludes \$595 transportation charge, all taxes, title/documentary fees, registration, tag, dealer prep charges, insurance, optional equipment, certificate of compliance or non-compliance fees, and finance charges. Prices may vary by dealer.

©1996 Mercedes-Benz of North America, Inc., Montvale, N.J., Member of the Daimler-Benz Group.

Always wear your seat belt and don't drink and drive. By permission of Charles Atlas Ltd. N.Y., 1994.